

SIMPLE LIFE

SIMPLE LIFE



Cairnhill Drive, Wolverhampton, WV14

£1,150 PCM

Stonefield Edge is a brand new village just 2.5 south east of Wolverhampton City Centre, featuring 123 stunning homes to rent.

The Irwell is a stunning home built with you in mind. Entering through the front door you are welcomed by an attractive kitchen with a range of contemporary fitted units and modern integrated appliances. Heading through the hallway will take you into a spacious living/dining area which is finished with beautiful wooden flooring and French windows which open out onto your private rear garden. The lower floor also benefits from a storage cupboard and WC.

Upstairs you will find two spacious double rooms, the master bedroom including a fitted, mirrored wardrobe, whilst the second bedroom benefits from having built in storage space. There is also a main bathroom equipped with a bath and shower.

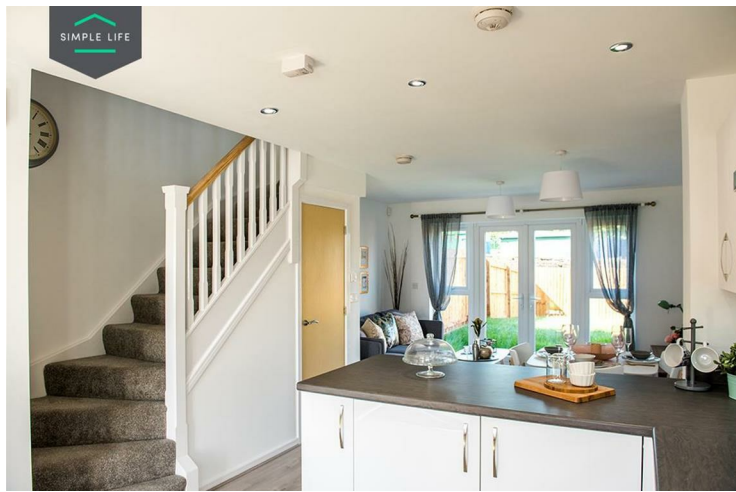
The market town of Bilston benefits from a range of shops including a Morrisons, Lidl and Argos, as well as the Springvale Way Retail Park. The pedestrianised area gives you convenient access to high street shops and the 150 market stalls set up 4 times a week.

For families with children, your education needs are well met with Stonefield Edge being within the admission area of 58 Good and Outstanding rated primary schools including Bilston C of E Primary School.

If you ever need to travel further afield, Wolverhampton train station is 2.5 miles from the development, whilst by car you can access the M6 within 3 miles providing easy access to the North West as well as further south to Birmingham.

Deposit: £1320
Holding Deposit: £260
Council Tax: B
Unfurnished
Available 17th February 2026





Key Features

- Car Parking Space
- Dishwasher
- Washing machine
- Modern kitchen worktops and units
- Wood-effect flooring downstairs
- Security Alarm
- Fridge-freezer
- Oven and Hob
- Carpets up the stairs and in the bedrooms

Location

